

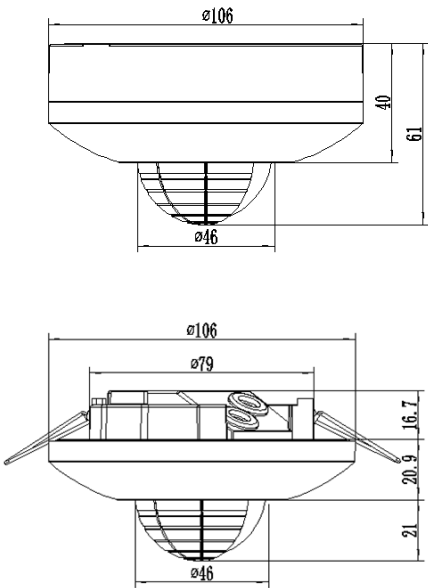


AuraGuard 16 – Indoor PIR Sensor



Product Features

- Surface or Recessed Mount
- Manual Override
- Sensor Shield Included
- Adjustable Time Delay, Lux and Sensitivity settings



Specification	
Model	SEN-IRID16
Sensor Type	PIR
Maximum Load	1000w (LED, CFL), 2000w (Incandescent)
Installation Height	2.2m~4m
Detection Distance	6m~16m
Detection Angle	360°
Time Delay	10s ~ 30mins
Light Sensor	2~2000lux
Power Requirement	220~240VAC
Housing	Polycarbonate
Product Dimension	Ø106mm x 61mm (Surface Mount) Ø106mm x 58.5mm (Recessed)
Weight	204g
Protection Rating	IP44
Warranty	5 Years

Specifications are subject to change without notice