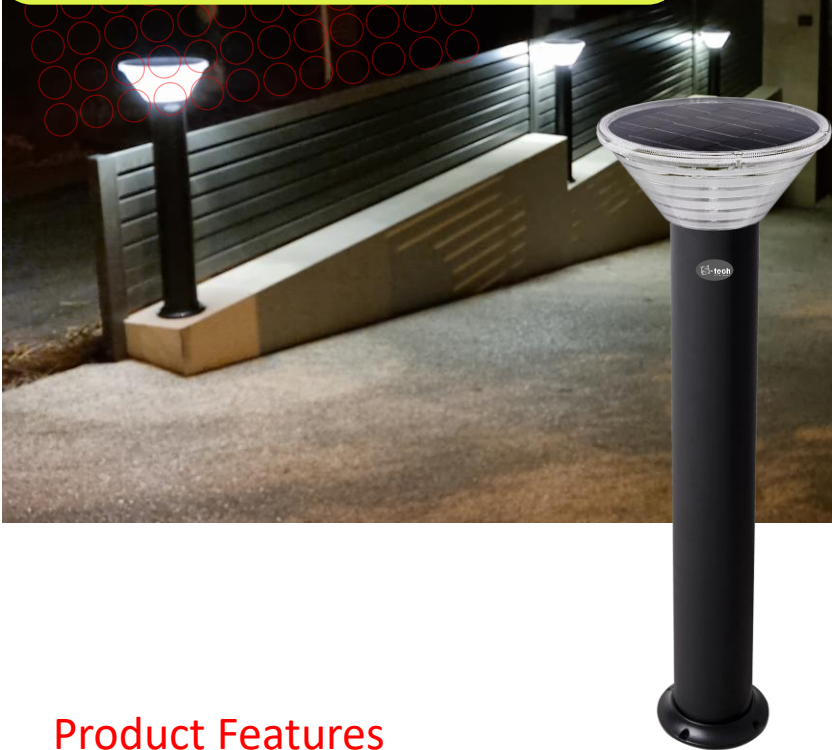


Product Specification



Product Features

- 40w Incandescent Equivalent
- RGB and White (3000~6000K)
- Automatic night-time operation
- Remote Control Included
- Replaceable Battery Pack
- Flange mount or direct bury options
- Flange Mount Options: 600mm or 900mm
- Direct Bury: 900mm (above ground)
- Aluminium Post
- IK10 Polycarbonate dome
- IP65, IK10 Rating
- Weight: 3.7kg



Light & Battery

Specification Overview



Vandal Resistance
IK10

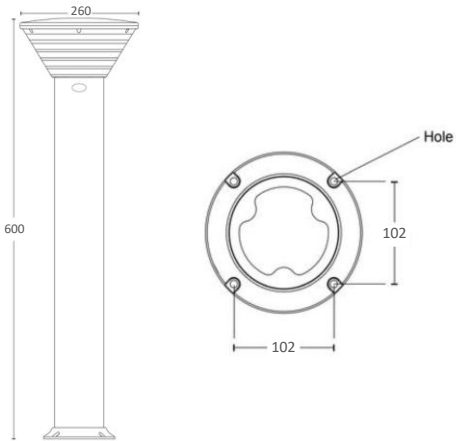


Model	Equivalent	Colour Temp	Lumens	Beam Angle	Post Colour	Post Type	Dimensions (Overall)
SBL-0.6MB-RGBW	40w Incandescent	3000~6000K + RGB	400lm	360°	Black	Flange Mount	Ø260 x 600mm
SBL-1MB-RGBW	40w Incandescent	3000~6000K + RGB	400lm	360°	Black	Flange Mount	Ø260 x 900mm
SBL-1DBP-RGBW	40w Incandescent	3000~6000K + RGB	400lm	360°	Black	Direct Bury	Ø260 x 900mm (above ground)

Solar Bollard Light
600mm Flange Mount

40w
Equivalent
(Incandescent)

Model	Power	Lumens	CCT	Dimension (Ø x H)	Weight
SBL-0.6MB-RGBW	40w Equivalent (Incandescent)	400lm	3000~6000K + RGB	Light Head Ø260 x 140mm Post Ø110 x 475mm Overall Height: 600mm	6kg

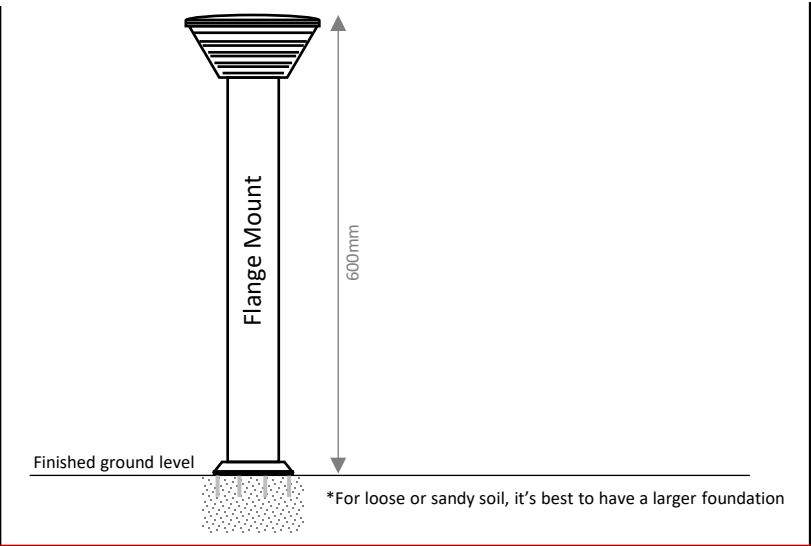
Specification				Dimensions	
CCT	3000K~6000K + RGB	Post	Aluminium		
Efficacy	>120lm/w	Light Head	Polycarbonate		
CRI (%)	≥80	Post Colour	Black		
Optics	360°	Operation Temperature	-10 °C to +40°C		
Solar Panel	Mono 5V/6.8W	Charging Time	~6 hours		
Battery	LiFePO4 3.2V, 36Wh				
Impact Rating	IK10				
Protection Rating	IP65	Warranty	2 Years		

Install Guides

A Guide to Bollard Spacing

Below is a quick guide to allow a calculation of the number of bollards required for each type of application using the 6000K colour temperature setting. This is to be used as a guide only however should you require your design to meet the AS/NZ standard then we highly recommend using a lighting designer to provide an approved design for your project.
(Pedestrian path 1.5m wide)

Pedestrian / Cycle Activity	Risk of Crime	Maintained Illuminance	Spacing in Metres
N/A	High	2 lux	4m
High	Medium	0.7 lux	6m
Medium	Low	0.3 lux	8m
Low	Low	0.14 lux	11m



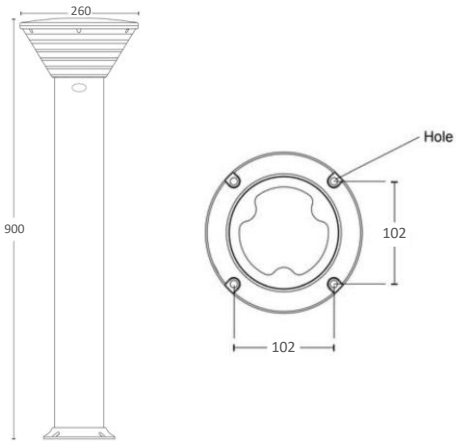
* S-Tech solar products are designed for dusk to dawn operation with added allowance for winter conditions, however you must be aware that in winter months it is possible that some nights the light will not last all night due to inclement weather conditions limiting charging time. Solar is not recommended for any locations classed as critical lighting areas where lighting is required all night.

Specifications are subject to change without notice

Solar Bollard Light
900mm Flange Mount

40w
Equivalent
(Incandescent)

Model	Power	Lumens	CCT	Dimension (Ø x H)	Weight
SBL-1MB-RGBW	40w Equivalent (Incandescent)	400lm	3000~6000K + RGB	Light Head Ø260 x 140mm Post Ø110 x 760mm Overall Height: 900mm	6kg

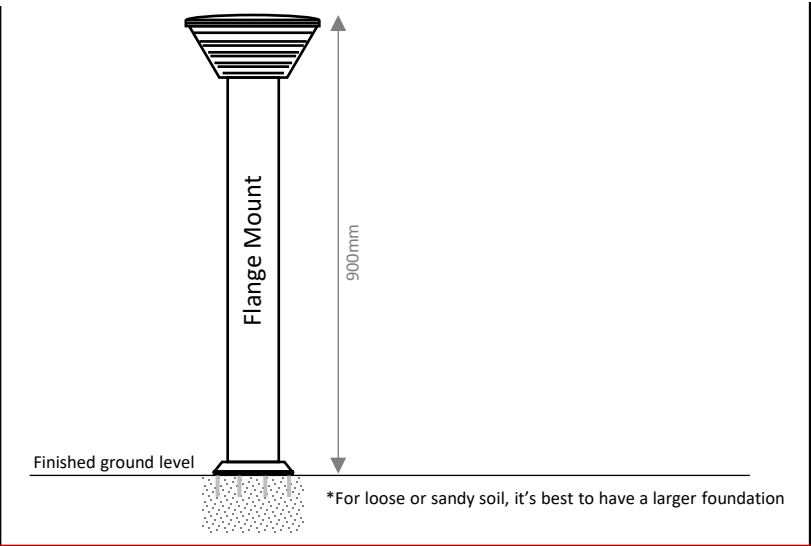
Specification				Dimensions	
CCT	3000K~6000K + RGB	Post	Aluminium		
Efficacy	>120lm/w	Light Head	Polycarbonate		
CRI (%)	≥80	Post Colour	Black		
Optics	360°	Operation Temperature	-10 °C to +40°C		
Solar Panel	Mono 5V/6.8W	Charging Time	~6 hours		
Battery	LiFePO4 3.2V, 36Wh				
Impact Rating	IK10				
Protection Rating	IP65	Warranty	2 Years		

Install Guides

A Guide to Bollard Spacing

Below is a quick guide to allow a calculation of the number of bollards required for each type of application using the 6000K colour temperature setting. This is to be used as a guide only however should you require your design to meet the AS/NZ standard then we highly recommend using a lighting designer to provide an approved design for your project.
(Pedestrian path 1.5m wide)

Pedestrian / Cycle Activity	Risk of Crime	Maintained Illuminance	Spacing in Metres
N/A	High	2 lux	4m
High	Medium	0.7 lux	6m
Medium	Low	0.3 lux	8m
Low	Low	0.14 lux	11m



* S-Tech solar products are designed for dusk to dawn operation with added allowance for winter conditions, however you must be aware that in winter months it is possible that some nights the light will not last all night due to inclement weather conditions limiting charging time. Solar is not recommended for any locations classed as critical lighting areas where lighting is required all night.

Specifications are subject to change without notice

Solar Bollard Light
900mm Direct Bury



Model	Power	Lumens	CCT	Dimension (Ø x H)	Weight
SBL-1MB-RGBW	40w Equivalent (Incandescent)	400lm	3000~6000K + RGB	Light Head Ø260 x 140mm Post Ø110 x 1200mm Overall Height: 900mm (above ground)	6kg

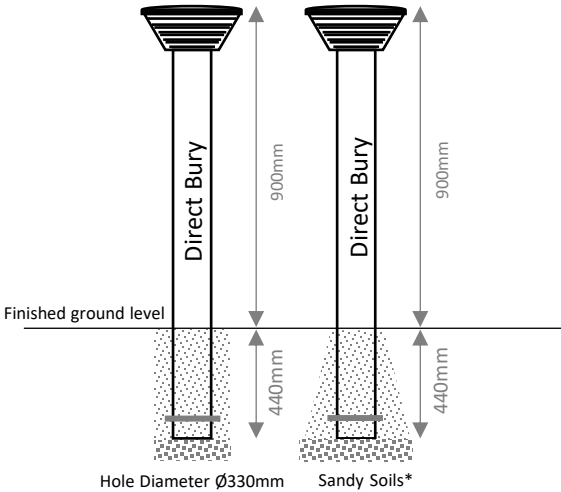
Specification				Dimensions	
CCT	3000K~6000K + RGB	Post	Aluminium		
Efficacy	>120lm/w	Light Head	Polycarbonate		
CRI (%)	≥80	Post Colour	Black		
Optics	360°	Operation Temperature	-10 °C to +40°C		
Solar Panel	Mono 5V/6.8W	Charging Time	~6 hours		
Battery	LiFePO4 3.2V, 36Wh				
Impact Rating	IK10				
Protection Rating	IP65	Warranty	2 Years		

Install Guides

A Guide to Bollard Spacing

Below is a quick guide to allow a calculation of the number of bollards required for each type of application using the 6000K colour temperature setting. This is to be used as a guide only however should you require your design to meet the AS/NZ standard then we highly recommend using a lighting designer to provide an approved design for your project.
(Pedestrian path 1.5m wide)

Pedestrian / Cycle Activity	Risk of Crime	Maintained Illuminance	Spacing in Metres
N/A	High	2 lux	4m
High	Medium	0.7 lux	6m
Medium	Low	0.3 lux	8m
Low	Low	0.14 lux	11m







*For loose or sandy soil, it's best to have a larger foundation

* S-Tech solar products are designed for dusk to dawn operation with added allowance for winter conditions, however you must be aware that in winter months it is possible that some nights the light will not last all night due to inclement weather conditions limiting charging time. Solar is not recommended for any locations classed as critical lighting areas where lighting is required all night.

Specifications are subject to change without notice

Solar Bollard Light Remote Control

Remote Control

- Turn ON the light
- Turn OFF the light
-
-  Warm White 3000K and adjust the CCT warmer
-  Cool White 6500K and adjust the CCT cooler
-
- +  Increase the brightness
-  Decrease the brightness
-
- 4H Set the light to work 4 hours per night
- TIME
- 8H Set the light to work 8 hours per night
-



Operation

- After setting required colour during the day, please wait 30 seconds for the light to turn off and enter night mode. DO NOT press the OFF button on the remote or the light will not turn on automatically at night
- For factory reset, press and hold the ON button for ~4 seconds, light will reset and turn on in 3000K confirming the reset
- If the light does not react to the remote control, double check that the power button has been set to the ON position (pushed in) on the light head (remove rubber stopper and use the allen key to stick through the hole and push the button on the light head, replace the rubber stopper once on)
- Control distance is up-to 25 metres in open air
- One remote can control up-to 50 lights at the same time (within the 25m range)
- When using the timer function, the light head will blink twice confirming it's received the command successfully. If you don't set the timer, the light operation will be around 12 hours (weather dependent).
- If the light seems to be in timer mode and you want it to operate dusk-to-dawn, follow the factory reset instructions above to reset all the settings in the light.
- If the light is not lasting all night (you may find this during winter), adjust the brightness of the light down to extend the battery life.

Lighting Distribution

