



20w UniFlood Solar Flood Light



Product Features

- Dusk to Dawn Operation
- Inbuilt PIR Motion Sensor
- Universal mounting options
- Remote control for mode settings
- Automatic night time operation
- 0-180° Adjustable light head and solar panel
- Adjustable Beam Angle (60°, 90° or 120°)
- IP65 Housing
- Weight: 2.3kg



Universal Mounting Options



Wall



Ground



Pole



Flagpole



Ext. Arm



continuous lighting



motion activation



ON - OFF
automatic
night activation



Specification Overview

Model	Power	Power Requirement	Colour Temp	Lumens	Beam Angle	Post Colour	Dimensions
SFL-U20	20w	Solar	6000K	2000lm	Adjustable 60°/90°/120°	Dark Grey	279.5 x 306 x 59.5mm

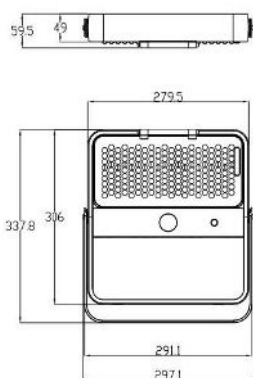
Product Specification



the
avenue
that you've
searching for.
coming soon.



20w UniFlood Solar Flood Light



Options:



Extension Arm – 500mm
Model: SFL-U-ARM



Turns ON Light to last mode set

Turns OFF light so it will not turn on at night

Mode Settings:

M1 = 100% (5H) then 20% until dawn

M2 = 60% dusk-to-dawn

M3 = 20% brightness until motion (100%) for 30s

T = 100% (2H) then reverts to previous mode

Specification

Model	SFL-U20
Colour Temperature	6000K
Lumen (lm)	2000lm
Efficiency (lm/w)	>100lm/w
Light Source	LED
CRI (%)	≥80
Beam Angle	Selectable 60°, 90° or 120°
Power Requirement	Solar Powered
Battery	LifePO4, 3.7V 10,000mAH
Charging Time	~8 Hours (from 0-100%)
Operation Time	Dusk to dawn*
Housing	Aluminium housing with toughened glass and PC lens
Remote Control	IR (up-to 8m)
Sensor	PIR (up-to 5m)
Lifespan	>40,000 hours
Operation Temperature	-20°C~+60°C
Product Dimension	279.5 x 306 x 59.5mm
Weight	2.3kg
Protection Rating	IP65
Warranty	2 Years

* S-Tech solar products are designed for dusk to dawn operation with added allowance for winter conditions, however you must be aware that in winter months it is possible that some nights the light will not last all night due to inclement weather conditions limiting charging time. Solar is not recommended for any locations classed as critical lighting areas where lighting is required all night.

Specifications are subject to change without notice

Product Specification

READING CINEMAS

NOW OPEN

BURWOOD BRICKWORKS

70 Middleborough Road
Burwood East 3151



20w UniFlood Solar Flood Light



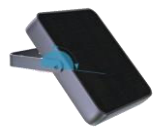
Beam Angle Selector

Simply rotate the Beam Angle selector to choose either 60°, 90° or 120°



PIR Sensor

Black sensor to eliminate false triggers by interference.
Max. detection: 5m



Universal Design

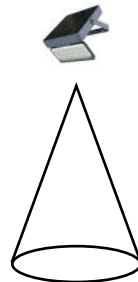
Both the LED section and Solar Panel is adjustable by 180°

60°



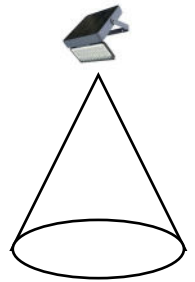
1.0m	773.7lx	1.16m
2.0m	193.4lx	2.31m
3.0m	85.96lx	3.46m
4.0m	48.35lx	4.63m
5.0m	30.95lx	5.78m
Height	Average Lux	Diameter (m)

90°



1.0m	372.2lx	1.94m
2.0m	93.05lx	3.87m
3.0m	41.35lx	5.81m
4.0m	23.26lx	7.75m
5.0m	14.89lx	9.68m
Height	Average Lux	Diameter (m)

120°



1.0m	191.9lx	2.68m
2.0m	47.98lx	5.36m
3.0m	21.32lx	8.04m
4.0m	11.99lx	10.72m
5.0m	7.67lx	13.4m
Height	Average Lux	Diameter (m)