



Torch Light Series

Product Options

- Adjustable Headlamp
- Multifunction Headlamp
- Inspection Light
- Multifunctional Flashlight
- Weatherproof Dive Torch

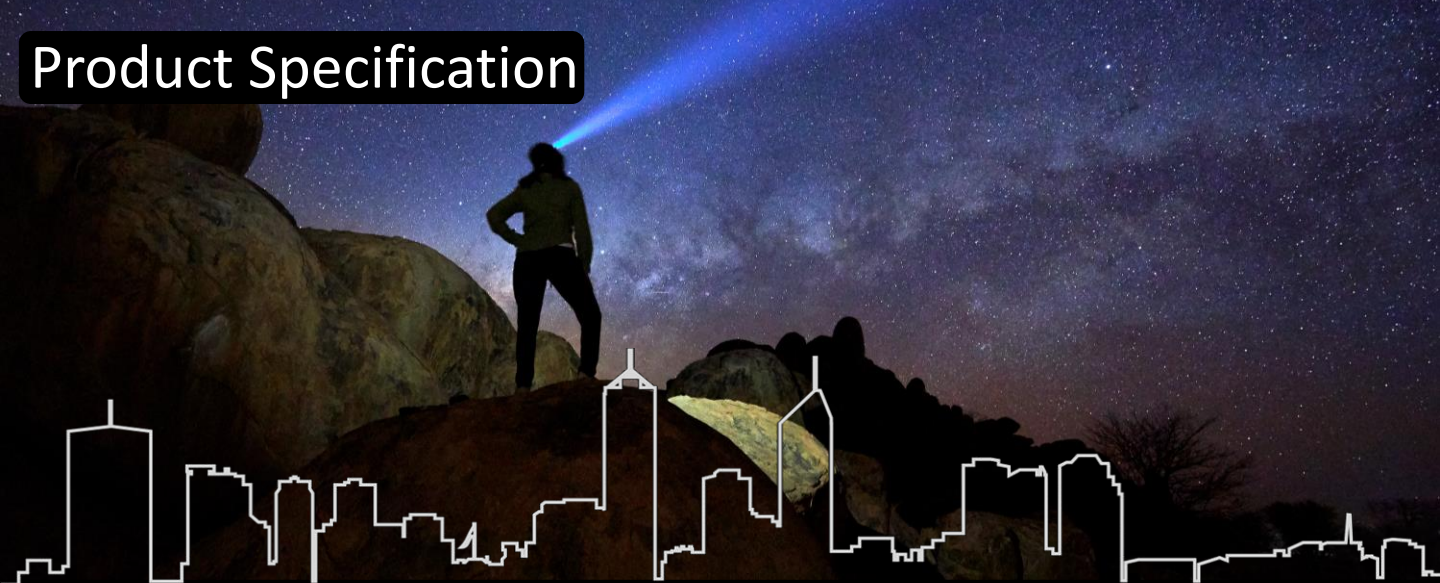


Specification Overview



Model	Type	Lumen	Run Time	Charge Time	Modes	Rating	Weight	Dimensions
THL-02	Headlamp	200lm	4H	1H	High-Low-Strobe-SOS-Red strobe	IP44	50g	65x32x39mm
THL-07	Headlamp	700lm	4H-6H	2.5H	STRIP: High-Low SPOT: High-Low	IPX4	70g	300x33x20mm
THL-08	Torch/ Headlamp	800lm	3H	2H	STRIP: High-Red-Red Strobe SPOT: High-Low	IP42	104g	140x21x21mm
THL-40	Torch	4000lm	7H	8H	FRONT: Low-Med-High-Strobe TAIL: Low	IP34	400g	∅52x140mm
THL-15-IP68	Torch (Dive)	1500lm	2H	1.5H	Single Light Mode	IP68	212g	151x26x37mm

Product Specification



Torch Light Series - Headlamp



Specification	Adjustable Headlamp	Multifunction Headlamp
Model	THL-02	THL-07
Features	<ul style="list-style-type: none"> • 5 Light Modes • Red Strobe Light • Rechargeable Battery with USB-A Charging 	<ul style="list-style-type: none"> • 2x Light Sources • Motion Activated • Rechargeable Battery with USB-C Charging
Lumen	200lm	700lm
Run-time	4 hours	STRIP: 4 hours / SPOT: 6 hours
Battery Type	Rechargeable polymer battery	Rechargeable polymer battery
Battery Capacity	500mAh	1200mAh
Charging Time	~ 1 hour	~ 2.5 hours
Material	ABS/PC with braided belt	ABS/PC with Rubber and braided belt
Size	65 x 32 x 39mm	300 x 33 x 20mm
Weight	50g	70g
Charging Type	Micro USB	USB-C
Protection Rating	IP44	IPX4
Light Modes	High-Low-Strobe-SOS Double Press in any mode for Red Strobe	STRIP: High-Low, SPOT: High-Low Long press (2s) both lights Strobe
Included in box	Headlamp, Built-in Battery, USB-A Cable	Headlamp, Built-in Battery, USB-C Cable
Warranty	1 Year	1 Year


Specifications are subject to change without notice

Product Specification



Torch Light Series – Torch Series



Specification	Inspection Light	Multifunctional Torch	Weatherproof Dive Torch
Model	THL-08	THL-40	THL-15-IP68
Features	<ul style="list-style-type: none"> • 2 x Light Sources • Rotating Head • Swivel Magnetic Base • Rechargeable Battery direct USB charge 	<ul style="list-style-type: none"> • 2x Light Sources • Beam Zoom • Aluminium Construction • Rechargeable Battery with USB-C Charging 	<ul style="list-style-type: none"> • IP68 Dive Torch • Waterproof • Aluminium Construction • Rechargeable Battery and USB powered charger 
Lumen	800lm	4000lm	1500lm
Run-time	3 hours	7 hours	2 hours
Battery Type	Rechargeable lithium polymer battery	Rechargeable Li-ion battery x 3	Rechargeable Li-ion battery
Battery Capacity	800mAh	8100mAh	2300mAh
Charging Time	~ 2 hours	~ 8 hours	~ 1.5 hours
Material	Aluminium	Aluminium	Aluminium
Size	140 x 21 x 21mm	Ø52 x 140mm	151 x 26 x 37mm
Weight	104g	400g	212g
Charging Type	USB-A	USB-C	USB Battery Charger
Protection Rating	IP42	IP34	IP68
Light Modes	STRIP: High-Red-Red Strobe SPOT: High-Low	FRONT: Low-Med-High-Strobe TAIL: Low	Single Light Mode
Included in box	Torch, Built-in Battery, USB-A Cable, Headlamp belt	Torch, Built-in Battery, USB-C Cable	Torch, Battery, Charger, Wrist Lanyard
Warranty	1 Year	1 Year	1 Year

Specifications are subject to change without notice