

Dimension	Clearance
A – Clearance above luminaire	0 mm
B – Side clearance to combustible building element	0 mm
C – Side clearance to bulk thermal insulation	0 mm
D – Clearance to auxiliary equipment (transformer for example)	0 mm

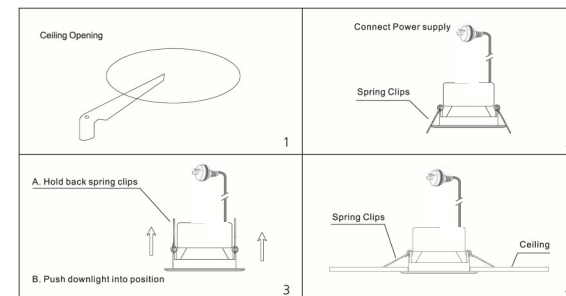
Please read these instructions carefully in full prior to carrying out the installation.

### IMPORTANT SAFETY ISSUES

- This product must be installed by a qualified electrician according to AS/NZS 3000.
- Ensure that the AC power is disconnected at the switchboard and test to ensure that there is no power on the circuit prior to starting installation.
- This product is rated to IP54 (front only) and is suitable for damp environments.
- Modification of this product will void any warranty
- When cleaning or replacing the light, please ensure the power is off and the light is completely cooled down. Cleaning can be done using a soft cloth and PH neutral detergent.

### INSTALLATION INSTRUCTIONS

- Disconnect the power at the switchboard
- Ensure surface mount socket is installed within 600mm of the lights position
- Refer to the packaging for cut-out size
- Cut-out the correct size hole in the ceiling where the light is to be positioned, avoiding roof timbers etc.
- Select the required LED colour using the slide switch on the back of the light.
- Plug in the AC cable into the surface mount socket
- Fit the down light into the ceiling
- Turn power back on at the switchboard and test the lights.



### DIMMER SELECTION

Marked S-tech down lights are suitable for dimming using most LED Dimmers, Trailing Edge or Universal dimmers. (refer to light specification)

**Leading Edge Dimmers are NOT to be used with S-Tech Down Lights**