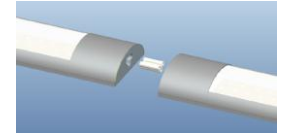


LED Integrated Slimline Connectable Batten – 42W

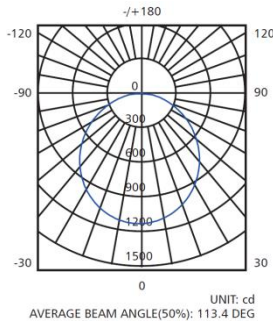
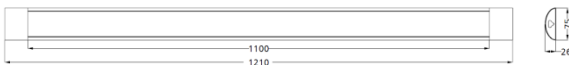
Model: SM-SL-1200C-42

S-tech's Integrated LED Slimline Connectable Batters are a complete fitting replacement for existing T8 or T5 installations, or perfect for new installations looking for a complete slimline LED solution in a single fitting. The connectable design allows up to 5 lights to be connected together for easy install or to make the lighting a feature.

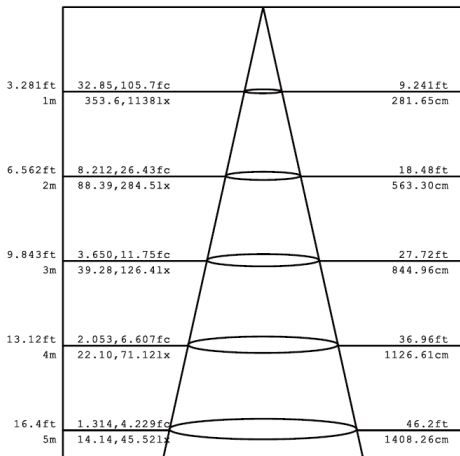


Product Features

- Only consumes 42w of power
- 110° beam angle
- Aluminium Housing
- Polycarbonate Diffuser
- Stainless Steel Clips
- IP20



Flux out: 2265 lm



Note: The Curves indicate the illuminated area and the average illumination when the Luminaire is at different distance.

SPECIFICATION		
Colour	Natural White (4000K)	Cool White (5000K)
Lumen (lm)	3592	3754
Efficiency (Lm/w)	>85Lm/w	
Light Source	SMD LED	
Beam Angle	110°	
Power Requirement	AC 100~240V	
Power Consumption	42W	
Maximum Lights Linked	5pcs (≤ 240W)	
Dimmable	No	
Housing	PC Diffuser and Base	
Lifespan	> 40,000 hours	
Operation Temperature	-20°C~+45°C	
Dimension (mm)	1210 (L) x 75 (W) x 26 (H)	
Protection Rating	IP20	
Warranty	5 Years	