

Dimension	Clearance
A – Clearance above luminaire	0 mm
B – Side clearance to combustible building element	0 mm
C – Side clearance to bulk thermal insulation	0 mm
D – Clearance to auxiliary equipment (transformer for example)	0 mm

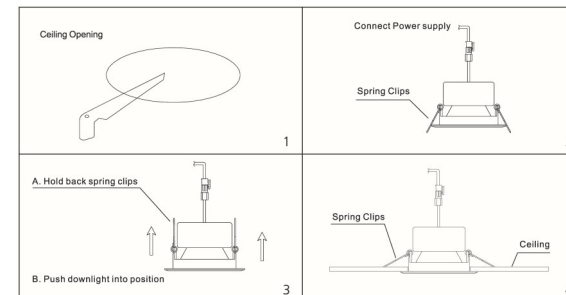
**Please read these instructions carefully in full prior to carrying out the installation.**

### IMPORTANT SAFETY ISSUES

- This product must be installed by a qualified electrician according to AS/NZS 3000.
- Ensure that the AC power is disconnected at the switchboard and test to ensure that there is no power on the circuit prior to starting installation.
- Refer to the packaging for the IP rating of this product, they are NOT suitable for damp environments.
- Modification of this product will void any warranty
- Do not connect power to the driver without the light connected and the required colour temperature selected (if applicable), this will void any warranty
- Do not hang the light between the driver and the light as damage to the connector may occur and void any warranty
- Do not cover the driver with any insulation or similar, this will void any warranty
- When cleaning or replacing the light, please ensure the power is off and the light is completely cooled down. Cleaning can be done using a soft cloth and PH neutral detergent.

### INSTALLATION INSTRUCTIONS

- Disconnect the power at the switchboard
- Ensure surface mount socket is installed within 600mm of the lights position
- Cut-out the correct hole (see table) in the ceiling where the light is to be positioned, avoiding roof timbers etc.
- Select the required LED colour using the slide switch on the back of the light or inline switch (if applicable)
- Mount the driver to the ceiling beam and connect the driver to the LED light
- Plug in the AC cable into the surface mount socket
- Fit the down light into the ceiling
- Turn power back on at the switchboard and test the lights.



Cut-Out Table

<b>Model</b>	STAR-0329	DL-1370	PDL-1090/1290	PDL-22165
<b>Cut-Out</b>	32mm	70~100mm	90mm	165mm
<b>Model</b>	PDL-22190	PDL-30190	PDL-50190	
<b>Cut-Out</b>	190mm	190mm	190mm	

### DIMMER SELECTION

Marked S-tech down lights are suitable for dimming using most LED Dimmers, Trailing Edge or Universal dimmers. (refer to light specification)

**Leading Edge Dimmers are NOT to be used with S-Tech Down Lights**