

# LED High Mast Flood Light - 1200W

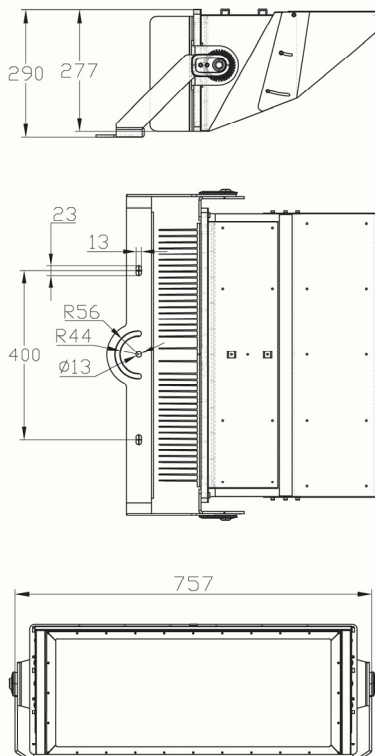
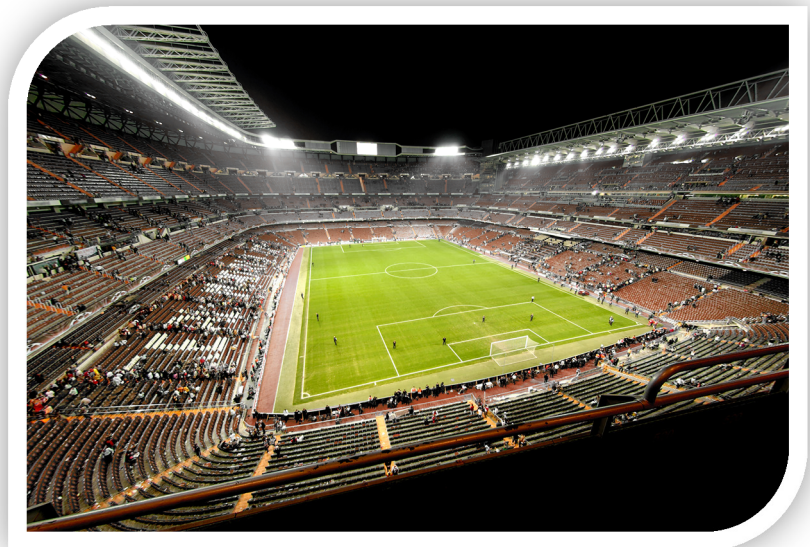
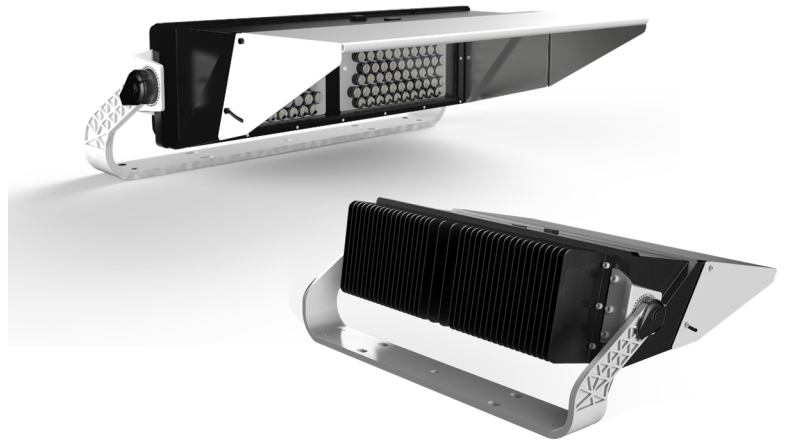
Model: ST-HML1200G-\_\_\_V  
Lens Angle

S-tech's 1200w LED high mast flood lights are the perfect choice for sports stadiums, airports, shipping ports or any high tower lighting locations.

Our robust design, latest high powered LED's and beam angle options with cut-off visor provides a superior light uniformity across the lit area and provides a lifetime of maintenance free performance.

### Product Features

- Only consumes 1200w of power
- Quality Meanwell Driver
- Drivers are supplied separately for mounting at the base of the pole
- 20kV Surge Protector
- Reduced glare with cut-off
- Corrosion resistant polyester powder coat finish
- IP65 weatherproof housing



### SPECIFICATION

Colour	Cool White (5000K)
Lumen (lm)	111,070lm
LED Efficiency (Lm/w)	>92lm/w
Illuminance Uniformity	>0.8
Light Source	Nichia LED's
CRI (%)	>80%
Beam Angle	18°, 25°, 45° or 60° options
Power Requirement	AC 90~305V
Total Power Consumption	1202W
Housing	Aluminium with Tempered Glass Face
Lifespan	> 50,000 hours
Operation Temperature	-40°C~+70°C
Dimension (mm)	757 ( W ) × 277 ( H ) x 575 ( D )
Weight (excluding drivers)	24kg
Protection Rating	IP65
Warranty	7 years