

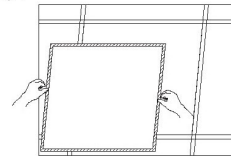
Please read these instructions carefully in full prior to carrying out the installation.

### IMPORTANT SAFETY ISSUES

- This product must be installed by a qualified electrician according to AS/NZS 3000.
- Ensure that the AC power is disconnected at the switchboard and test to ensure that there is no power on the circuit prior to starting installation.
- This product is rated to IP20 and is not suitable for damp environments.
- Modification of this product will void any warranty.
- When cleaning or replacing the light, please ensure the power is off and the light is completely cooled down. Cleaning can be done using a soft cloth and PH neutral detergent.

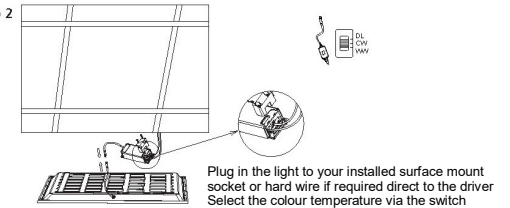
### INSTALLATION INSTRUCTIONS

Step 1



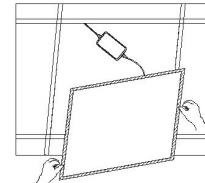
Remove the T-Bar plaster panel

Step 2



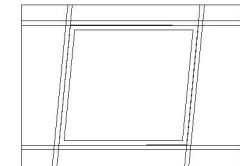
Plug in the light to your installed surface mount socket or hard wire if required direct to the driver  
Select the colour temperature via the switch

Step 3



Fit the LED T-Bar into the ceiling frame

Step 4



The light is installed and ready to power on

**Note:** This product is colour switching, please remember to select the correct colour prior to the final assembly of the light.