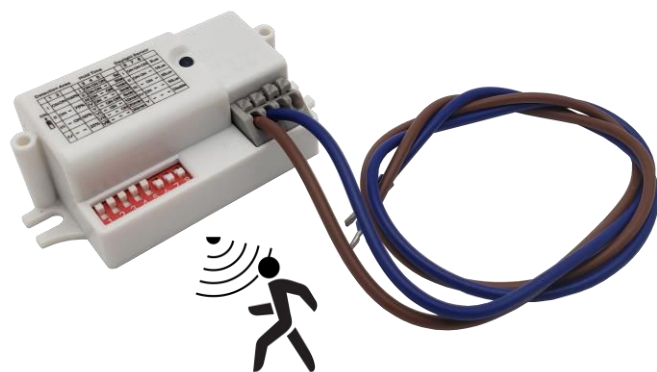




Microwave Motion Sensor for LED Bunker Light

Product Features

- 5.8G Microwave Motion Sensor
- Installed in the sensor cut-out area of the 20w or 30w bunker (requires minimal re-wiring)
- Dip switch settings for distance, time and daylight sensor.
- Override function to disable microwave sensor



Detection Area

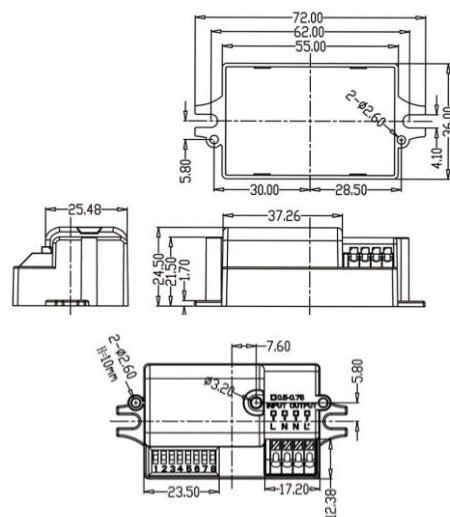
	1	2	
I	ON	ON	100%
II	ON	-	75%
III	-	ON	50%
IV	-	-	25%

Detection Area

	6	7	8	
I	ON	ON	ON	2Lux
II	ON	ON	-	10Lux
III	-	ON	-	25Lux
IV	ON	-	-	50Lux
V	-	-	-	Disable

Hold Time

	3	4	5	
I	ON	ON	ON	5S
II	ON	ON	-	30S
III	ON	-	ON	1min
IV	ON	-	-	3min
V	-	ON	ON	5min
VI	-	ON	-	10min
VII	-	-	ON	20min
VIII	-	-	-	30min



Specification Overview



Model	Standby Power	Power Requirement	Fits Model	Dimensions
WL-BH20-MMS2	<0.5w	220~240VAC	WL-BH20-3C including emergency versions	72 x 36 x 24.5mm

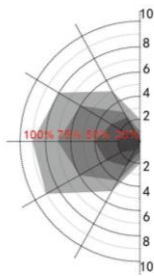
Product Specification



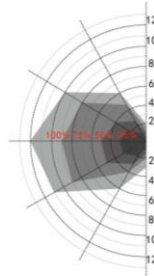
Microwave Motion Sensor for LED Bunker Light

Detection Area

Wall mounted height: 2m
Sensitivity: 100%/75%/50%/25%

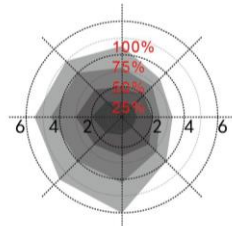


Normal moving (Speed: 1m/s)

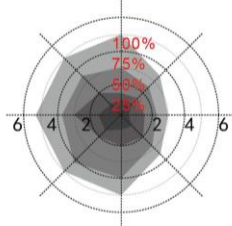


Slow moving (Speed 0.3m/s)

Ceiling mounted height: 3m
Sensitivity: 100%/75%/50%/25%

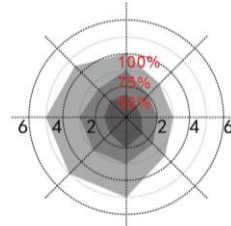


Normal moving (Speed:1m/s)

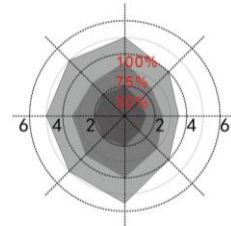


Slow moving (Speed 0.3m/s)

Ceiling mounted height: 6m(*)
Sensitivity:100%/75%/50%



Normal moving (Speed:1m/s)



Slow moving (Speed: 0.3m/s)

*50%,75%,100% detection sensitivity is workable when installed at 6m mounting height. Only 25% sensitivity is not able to detect motion signal.